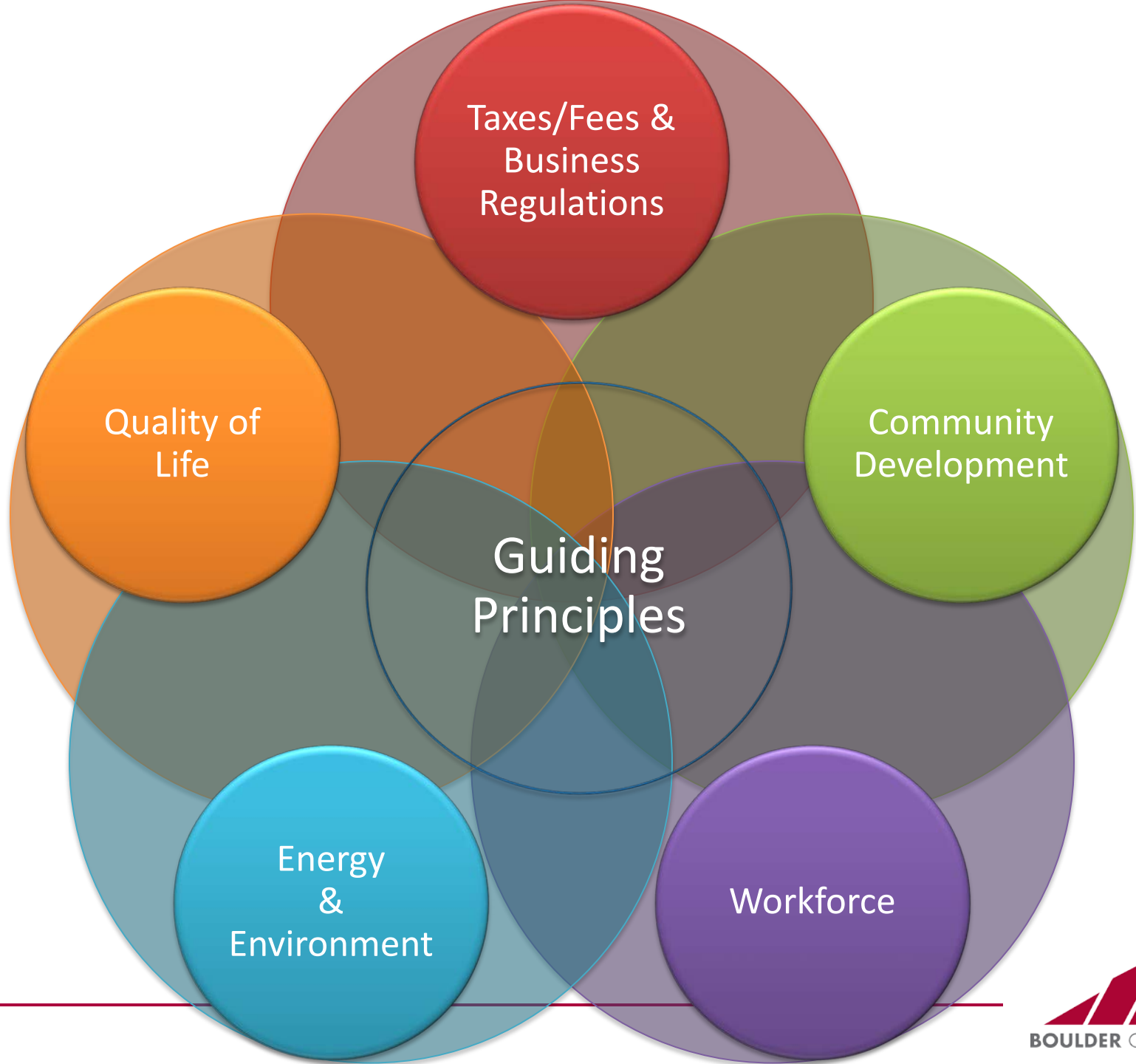


2016 Policy Agenda

January 2016



Guiding Principles

Our Policy Agenda identifies the issues most critical to our member businesses and organizations, and to advocating for economic interests in balance with the social and environmental values that make Boulder a great and unique place to live, work and play. We work to convene and collaborate with community groups and local and regional leadership for solutions.

The Chamber Board of Directors strongly believes that policy action in these areas will advance the Chamber's mission to ensure that the Boulder area remains a hub for leadership in innovation and entrepreneurship - economically vibrant, competitive and attractive to businesses now and into the future.

A strong regional economy depends on strong businesses and industries. For this reason, the Boulder Chamber and its Boulder Economic Council advocate for policies which support

- business formation, recruitment, retention and relocation within our region
- innovation and entrepreneurship, and
- key primary industries: aerospace, bio-science, cleantech, IT/Software, natural products, agriculture, outdoor recreation, tourism, and research (including CU Boulder and federal labs)

while respecting our community's commitment to environmental and social sustainability.

Guiding Principles

Long term economic stability requires good governance. The Boulder Chamber supports

- broadly representative and inclusive civic participation,
- sound long-term fiscal and land use planning, and
- an energy strategy that responds to both short and long term necessity.

Supportive infrastructure draws economic investment. The Boulder Chamber supports

- appropriate and effective regional transportation and housing options,
- strong public and private education and workforce development, partnering with educational institutions
- Enabling technologies for the innovation economy

Focus Issues

- Local & Regional Transportation
- Affordable Housing
- Boulder Valley Comp Plan Update
- Development Fees
- Energy and the Environment
- Small Business Regulatory Proportionality



Taxes, Fees & Business Regulations

Appropriate taxes, fees and regulations maintain important public services and infrastructure. We favor levels that carefully balance the community benefits with the cost and associated impacts to taxpaying businesses and individuals.

We seek clearly delineated rates that will not inhibit businesses in any sector. We support ample notice, measurable goals, clear explanations, and adequate input opportunities for affected businesses whenever the City considers new and/or renewing taxes, fees and regulations.

Dashboard

- Monitor Potential Taxes and Fees
 - Minimum or Living Wage Ballot Issue
 - Citywide Housing Linkage fee
 - Transportation Maintenance Fee
 - Head Tax/Fee
 - Flood related insurance impact
 - County Sustainability Tax
 - TABOR/Building a Better Colorado – 2016 Ballot
 - Scientific and Cultural Facilities District Reauthorization
 - Development Impact Fees (priority)
 - Single Payer Health Plan (ballot – position?)
- Monitor Potential New Regulations
 - Commercial Energy Efficiency
 - Drug-Pricing Transparency
 - Business Recycling and Composting
 - Grocery Store Liquor Sales
 - Marijuana Regulation
 - Small Business Proportionality
 - Construction Defects Bill
- Revenue Watch – appropriate and impactful spending of taxpayer dollars
 - Community, Culture and Safety tax
 - Marijuana sales and excise taxes, state and local
 - Online Sales Tax, local and federal
 - Federal funding for research and development by CU, CO-Labs and private companies
 - Transparency in analysis and decision-making as process continues
 - Regular accounting of spending

Transportation, Housing and Land Uses

We support policies and cost-effective funding to improve comprehensive transportation infrastructure planning and transit enhancements that include additional supporting infrastructure. Considerations should take into account all modes of travel.

Efficient local and regional transportation networks are key requirements for our community's economic, social and environmental health.

We encourage a built environment that fosters economic vitality and innovation by meeting the needs of businesses and residents now and into the future.

We seek sustainable solutions to current issues that allow Boulder to achieve its goals for the next 20 years.

Dashboard

- A focus on enhancements to existing corridors that meet community goals and benefits
- Boulder Valley Comprehensive Plan Update: informed input on Housing, Transportation and Space for Business; sustainable solutions related to commercial and residential zoning balances with a focus on existing transportation corridors.
- Arts and culture should be considered in Comp Plan and discussions about creating a vibrant community. Consider live/work housing options for artists and art as a public benefit in site reviews.
- Infrastructure for innovation economy – Work to support the advancement and implementation of the Boulder Broadband feasibility study outcomes.
- Advocate for adequate supporting infrastructure related to development projects such as sufficient parking, access and pedestrian improvements.
- Local Transportation - ensure balanced planning for all modes
 - Address impacts of greater density including parking availability
 - Collect data on commuting, method, means, and demographics
 - Responsiveness to local transportation projects, Living Labs.
- Regional Transportation – regional collaboration to ensure our area receives fair share of effective investment
 - Northwest Area Mobility Study follow-up
 - FasTracks and Arterial Bus Rapid Transit (SH 7 & Hwy 119 BRT)
 - US 36 First & Final Mile Connections
- Housing Strategies, Programs and Funding to meet the needs of an economically diverse workforce.
- Support the planning for a Conference Center and solutions related to CU's long-term vision for its South Campus
- Civic Center/Civic Pad as opportunities to realize economic vitality goals.
- Speak to development projects, zoning and land use initiatives that support achieving community benefits.
- Promote community development that provides livable, walkable access to businesses.
- Respond to needs of local businesses in the context of the Community Hospital Re-development; engage through our networks.
- Spaces for Business guided by Economic Sustainability Strategy
 - diversify employment centers
 - Class A office space to help keep Boulder companies in Boulder
 - Commercial & Industrial Zoning Update
 - East Arapahoe Planning
- Sustainable Urbanism, smart infill and redevelopment
 - Neighborhoods that are vibrant and pedestrian friendly
 - Centers and Streets including study of adjoining land use
- Convene multiple perspectives for discussing development issues
- Support policies informed by data driven solutions
- Jobs-Population: Jobs, Housing, Land Use, Development
- Monitor and respond to potential ballot items, fees and ordinances.

Education & Immigration

We support opportunities and partnerships to address the need for quality education as critical to developing an inclusive workforce with the required education and communication skills to succeed in tomorrow's job market and to create the much needed jobs of the future. We support an effective, financially sound public education system as well as a robust private education sector to develop the potential of our future workforce, including all of Colorado's diverse students, from early childhood learning through higher education.

We support programs and policies that ensure our economy and our employers can access the kind of talent they need to grow. Immigration is a key economic issue for Colorado, especially for tech and business development, filling workforce requirements, and retaining educated and trained international students. Our high-tech and agricultural sectors are particularly impacted by our broken immigration system, and we stand behind the real, viable solutions they have been involved in creating.

Dashboard

- Support Budget fix at State level to increase State Funding for K-12 and Higher Education
- Convene Colorado Chambers to discuss and advocate for funding options.
- Protect state investment in Boulder's educational institutions , and promote and celebrate successes by CU and other institutions
- Ensure both state and federal reforms are effective and come with funding to implement.
- Support Early Childhood Education as cost effective way to improve educational outcomes
- Partner with private organizations to support effective Technical/Workforce Training
- Participate in Living Wages discussion, assess City adoption impacts
- National immigration reform to align policies with the economic needs of our country and our community, particularly the tech community

Energy & Environment

We recognize the economic benefits of effective energy efficiency retrofits, sustainable business operations, and responsible growth in all energy sectors, and encourage reasonable incentives and education efforts to implement those goals.

The Boulder Chamber supports an energy strategy that responds to both short and long term necessity and that promotes innovation that benefits economic vitality. We generally favor “carrots” over “sticks” as a method for achieving our shared goals.

The Chamber supports the City of Boulder’s 2050 carbon reduction goals.

Dashboard

- Boulder’s Electrical Utility Discussions on Municipalization
- Commercial Energy Efficiency Ordinance
- Clean-tech and Innovation (includes Energy Efficiency
 - (State) Colorado Clean Energy Cluster
 - Board members
 - Promote success stories (i.e., Business Sustainability Award, Boulder Energy Challenge projects)
 - (Nat’l) Chambers for Innovation and Clean Energy
- Energy Futures Options Analysis
 - Fair representation for business and commercial ratepayers who face the greatest monetary risk
 - Analysis of options for meeting greenhouse gas reduction goals which may prove more immediate and cost effective than municipalization
 - Represent and support businesses to respect confidential information/trade secrets
- Support environmentally responsible energy development
- Waste
 - Participate in communication and promote flexible implementation of the City’s new commercial recycling and composting ordinance
- Water
 - Regional availability (east county and further)
 - Ongoing flood mitigation
 - Fracking

Quality of Life

The Boulder Chamber advocates for economic interests in balance with social and environmental values.

Balancing these priorities advance the Chamber's mission to ensure that the Boulder area remains economically vibrant, competitive and attractive to businesses now and into the future.

It is thanks to many decades of planning and effort to make Boulder a great place to live, work and play that Boulder has achieved national recognition for leadership in business innovation and entrepreneurship.

Diversity and inclusiveness are fundamental in all aspects of public policy.

Dashboard

- Livable Neighborhoods – compact, affordable, walkable/bike-able, mixed use, high quality connectivity
- Arts and Culture - arts districts, funding, zoning, bring into neighborhoods and engage business community
- Open Space as a community asset
- Social Safety Net
- Social/Income Inequality
- Be at the table for City's efforts on the impacts of homelessness on the community overall, and to the Civic Area.